

Black Bear Regulations

INFORMATION FOR ALL BLACK BEAR HUNTERS

Licence fees can be found on page 12.

Firearms

Big game, including black bears, may only be hunted with a firearm (this includes bows). If you are hunting deer or moose at the same time you are hunting black bears, you may only use or carry (on your person, in a vehicle or boat) a firearm of the type permitted for deer or moose, as the case may be, at that time in that WMU.

Specifications on the firearms, bows, bolts and arrows that are permitted when hunting black bear can be found on page 22.

Party Hunting for Black Bears

Party hunting for black bears is permitted during the open season for black bears **under a set of specific conditions.** The list of conditions can be found on page 23.

Sealing and Transporting Black Bears

If you have killed a black bear while hunting alone, you must immediately after the kill and at the kill site securely attach the game seal to the animal in the manner described on the seal. The seal must remain attached while transporting the carcass.

If party hunting for black bears, the member whose game seal is to be used must, immediately after the kill and at the kill site, securely attach the game seal to the animal in the manner prescribed on the seal.

A person who seals a black bear must notch out the month, date and time of the kill on the game seal.

Only the hunter whose game seal is to be used is allowed to attach the game seal to the black bear. It is illegal to transfer a game seal in order to seal a black bear.



Other Black Bear Hunting Regulations

It is illegal to hunt black bears within 400 m (437 yd.) of a waste disposal site, regardless of whether the land is Crown or private.

It is illegal to shoot or interfere with black bears in their dens, or damage or destroy their dens.

It is illegal to possess a bear gallbladder that has been separated from the bear carcass. Leave the gallbladder with the entrails after field dressing your bear.

Export and Shipping

See General Regulations, page 28, for information on Export and Shipping.

In some instances, both a CITES and a Provincial Export permit are required. Except as outlined below, a resident or non-resident black bear hunter must also obtain a Convention on International Trade in Endangered Species of Wild Fauna and Flora (CITES) export permit through an MNR office when a black bear or its parts are being exported from Canada.

species at risk



act today
so they have tomorrow

Ontario is home to an amazing diversity of plants and animals, but more than 180 of these are species at risk. Species designated as Extinct, Extirpated, Endangered, Threatened, or Special Concern are listed on the **Species at Risk in Ontario List.**

Hunters may be interested to know that many of these species are also listed as Specially Protected Wildlife – mammals, birds, reptiles, amphibians and invertebrates – under the Fish and Wildlife Conservation Act. Refer to the **Definitions** section, page 79.

You can help protect these species by reporting any illegal activity to the Ministry of Natural Resources. Call the toll-free TIPS Line at 1-877-TIPS-MNR (847-7667) 24 hours a day, seven days a week. Your information will be used to help Conservation Officers investigate violations.

To view the Species at Risk in Ontario List, visit <http://www.mnr.gov.on.ca/mnr/speciesatrisk/>

A Canadian CITES export permit is no longer required for U.S. or Canadian resident bear hunters transporting their black bear in a fresh, frozen or salted condition back to the U.S. or through the U.S. en route to another part of Canada at the conclusion of their hunt. The black bear must be part of the hunter's accompanying baggage.

NOTE: Materials sent as cargo, even if on the same flight as the hunter, are considered commercial and must be accompanied by CITES permits. This exemption does not apply to taxidermy mounts or black bears that are in any condition other than fresh, frozen or salted.

CITES export permits are still required for ALL black bear exports to countries other than the United States.

CITES permits are not normally available near border crossings and, consequently, hunters are advised to obtain any required permits from a source closest to where they are hunting.

CITES export permits are available free of charge.

In some countries, importation of black bears is restricted. Requirements for importation should be determined by the exporter.

For more information on CITES, visit www.cites.ca

INFORMATION FOR RESIDENT BLACK BEAR HUNTERS

Residents who purchase a black bear hunting licence are required to complete a mandatory questionnaire and mail it to MNR by December 15 of the year of the hunt. A hunter must submit the mandatory questionnaire even if they did not bear hunt. The questionnaire is included on page 69 of this publication. A copy can also be obtained by visiting a ServiceOntario office, or from the MNR website at <http://www.mnr.gov.on.ca/mnr/fwmenu.html>.

A resident hunter must complete the mandatory questionnaire, place it in an envelope, and mail it to MNR, Big Game Assessment Program, 1350 High Falls Road, Bracebridge ON P1L 1W9 by December 15 of the year of the hunt.

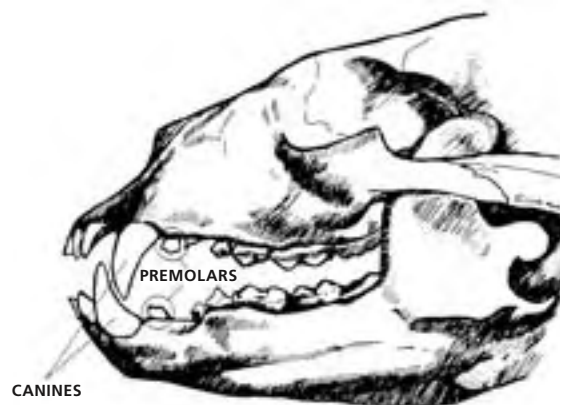
WMU-specific **second game seals for black bears** may be available to resident bear hunters in WMUs where there are no sustainability concerns. The second game seal allows a resident hunter to harvest a second black bear. These seals are available from ServiceOntario offices. You can contact ServiceOntario in August of the year of the hunt for information on WMUs where second game seals are available or visit www.mnr.gov.on.ca/mnr/fwmenu.html. **It is illegal to hunt in a WMU not specified on the game seal when hunting black bears under a second game seal.**

BLACK BEAR HUNTERS WE NEED YOUR HELP

Successful black bear hunters can assist the Ministry of Natural Resources in determining the age structure of local bear populations by submitting for analysis two premolar teeth from each bear harvested. This information provides data necessary for the sustainable management of the species.

In return for your support of wildlife management efforts, an Ontario Bear Hunter Crest and information about the age of your bear(s) will be mailed to your home address, usually within six months. Please contact the MNR office in the area in which you will be hunting, or your bear operator, for more information.

Premolar teeth should be extracted shortly after the animal has been killed while the jaw is still pliable. The first premolar is a small, single-rooted peg-like tooth located just behind the canines. To remove the tooth push the blade of a knife down along all sides of the tooth between it and the gum. Gently loosen the tooth by rocking it back and forth using the canine for leverage, then carefully remove the tooth using pliers. Care should be taken when extracting the tooth to ensure that the root is not broken.



INFORMATION FOR NON-RESIDENT BLACK BEAR HUNTERS

A non-resident who wishes to hunt a black bear in Ontario must have a Black Bear Hunting Licence Validation Certificate (white copy) to validate their non-resident black bear hunting licence. This certificate can be obtained from a bear operator (operator of a tourist establishment, guide or air carrier) licensed in Ontario to provide black bear hunting services to non-residents.

The following non-residents are not required to use a licensed bear operator:

- A non-resident hunting with an immediate relative who is an Ontario resident licensed to hunt a black bear in a Wildlife Management Unit (WMU) that has an open season for non-residents. Immediate relative, when used in reference to a person, means that person's grandparent, parent, spouse, child, sibling or grandchild.
- A non-resident who is the owner of property in a WMU that has an open black bear season for non-residents.

A non-resident who qualifies under either of these two exceptions **MUST** still apply for the validation certificate at an MNR office in the area of the hunt. A non-resident black bear hunting licence is not valid unless a validation certificate accompanies it. Where a property is owned by more than one person or by a corporation, only one validation certificate will be issued. The non-resident landowner can hunt only in the WMU where the property is located. See also Licence Information, page 12.

A non-resident hunter using the bear hunting services of an operator licensed to provide black bear hunting services must hunt only in the areas designated on the Black Bear Hunting Licence Validation Certificate received from the operator. These areas can include Crown or private land located within a Bear Management Area (BMA) assigned to the operator, and private land located within a WMU designated on the operator's licence. The licence to provide black bear hunting services does not permit the operator to provide hunting services on private land located within a BMA licensed to another operator. The operator must have permission of the landowner in order to provide bear hunting services to clients on private land.

Non-resident hunters are required to report their black bear hunting activity and harvest by November 30 of the year of the hunt. To report, the hunter must complete, sign and date the hunter mandatory report on the pink copy of the Black Bear Hunting Licence Validation Certificate held by the issuer of the certificate (operator licensed to provide bear hunting services or MNR office). It is the responsibility of the issuer to return the hunter's completed mandatory report to MNR.

ATTENTION ALL HUNTERS

If you harvest an animal wearing an ear-tag that contains phone number 1-866-514-2327, this animal was chemically immobilized in the past using veterinary drugs. Health Canada has established recommended guidelines for consumption. Please call the above number for specific information on whether Health Canada would recommend that the meat of your animal be consumed.

2007 Black Bear Seasons Rifles, Shotguns, Archery and Muzzle-loaders			
WMU(s)	Resident – Open Season	* Non-resident – Open Season	Conditions (Restrictions Only)
1A, 1C, 1D, 2, 3, 4, 5, 6, 7B, 8, 9A, 9B, 10, 11A, 11B, 12A, 12B, 13, 14, 15A, 15B, 16A, 16B, 16C, 17, 18A, 18B, 19, 21A, 21B, 22, 23, 24, 25, 26, 27, 28, 29, 30, 31, 32, 33, 34, 35, 36, 37, 38, 39, 40, 41, 42, 43, 44, 45	Aug. 15 to Oct. 31	Aug. 15 to Oct. 31	
7A	Aug. 15 to Oct. 31	Aug. 15 to Oct. 31	Archery and muzzle-loaders only
46, 47, 49, 50, 53A, 53B, 64, 66, 67, 69A, 69B, 71, 72, 73, 74, 75, 76, 83, the geographic townships of Keppel and Sarawak in 82A and the geographic township of Amabel in 84	Aug. 15 to Oct. 31 Sept. 4 to Nov. 30	Aug. 15 to Oct. 31 Sept. 4 to Nov. 30	
48, 54, 55A, 55B, 56, 57, 58, 59, 60, 61, 62, 63, 68	Sept. 1 to Nov. 30	Sept. 1 to Nov. 30	

* A Black Bear Hunting Licence Validation Certificate is required for non-residents hunting black bear.